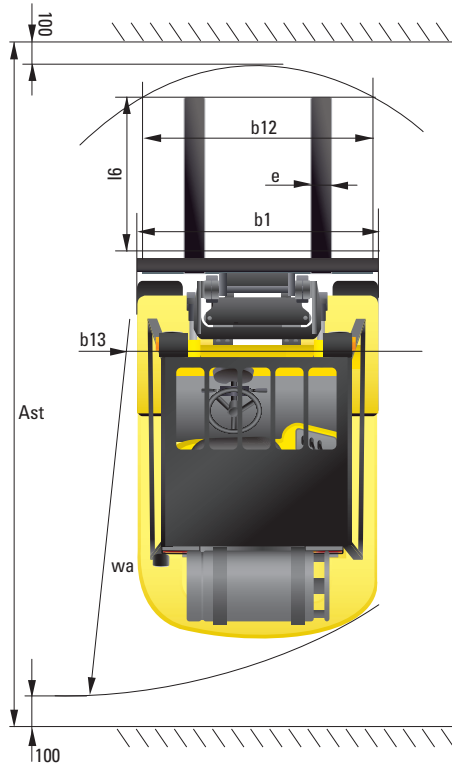
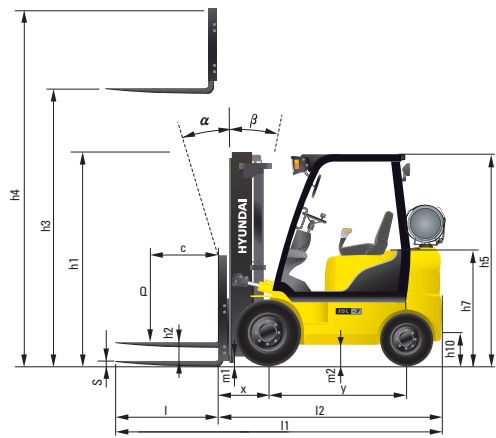


Dimension



Specification

Identification				
1.1	Manufacturer	Hyundai	Hyundai	Hyundai
1.2	Manufacturer's type designation	15L-7 / 15G-7	18L-7 / 18G-7	20LA-7 / 20GA-7
1.3	Drive: electric (battery or mains), diesel, petrol, fuel gas, manual	FUEL GAS / PETROL	FUEL GAS / PETROL	FUEL GAS / PETROL
1.4	Type of operation: hand, pedestrian, standing, seated, order-picker	seated	seated	seated
1.5	Load capacity / rated load	kg	1,500	1,750
1.6	Load center distance	c mm	500	500
1.8	Load distance, center of drive axle to fork	x mm	394	399
1.9	Wheelbase	y mm	1,410	1,410
Weights				
2.1	Service weight	kg	2,818	2,992
2.2	Axle loading, loaded front/rear	kg	3,726	4,092
2.3	Axle loading, unloaded front/rear	kg	1,276	1,234
Wheels, Chassis				
3.1	Tires: solid rubber, superelastic, pneumatic, polyurethane	Pneumatic	Pneumatic	Pneumatic
3.2	Tires size, front (ø x width)	6.50-10-12PR	6.50-10-12PR	6.50-10-12PR
3.3	Tires size, rear (ø x width)	5.00-8-10PR	5.00-8-10PR	5.00-8-10PR
3.5	Wheels, number front x rear (x=driven wheels)	2 x 2	2 x 2	2 x 2
3.6	Track width, front	mm	890	890
3.7	Track width, rear	mm	910	910
Basic Dimensions				
4.1	Mast / fork carriage tilt forward / backward (α / β)	degrees	6 / 10	6 / 10
4.2	Lowered mast height	h1 mm	2,155	2,155
4.3	Free lift	h2 mm	145	145
4.4	Lift height	h3 mm	3,325	3,325
4.5	Extended mast height	h4 mm	4,332	4,332
4.7	Overhead load guard (cab) height	h5 mm	2,110	2,110
4.8	Seat height / standing height	h7 mm	1,040	1,040
4.12	Coupling height	h10 mm	262	261
4.19	Overall length	l1 mm	3,133	3,163
4.20	Length to face of forks	l2 mm	2,233	2,263
4.21	Overall width	b1 mm	1,070	1,070
4.22	Fork dimensions (hook type)	l / w / t mm	900 x 100 x 35	900 x 100 x 35
4.23	Fork carriage ISO 2328, class / type A,B	II / A	II / A	II / A
4.24	Fork-carriage width	b12 mm	980	980
4.31	Ground clearance, loaded, under mast	m1 mm	120	120
4.32	Ground clearance, centre of wheelbase	m2 mm	145	145
4.33	Aisle width for pallets 1,000x1,200 crossways (LxW)	Ast mm	3,579	3,609
4.34	Aisle width for pallets 800x1,200 lengthways (WxL)	Ast mm	3,779	3,809
4.35	Turning radius	Va mm	1,985	2,013
4.36	Smallest pivot point distance	b13 mm	586	586
Performance Data				
5.1	Travel speed, unloaded	km/h	20.3	20.3
5.2	Lift speed, loaded/unloaded	mm/s	650 / 680	650 / 680
5.3	Lowering speed, loaded/unloaded	mm/s	500 / 450	500 / 450
5.5	Drawbar pull, loaded	kg	1,775	1,786
5.7	Gradient performance, loaded/unloaded	%	37 / 24	33.1 / 21.8
5.9	Acceleration time, loaded/unloaded (10m)	sec	NA	NA
5.10	Service brake		Foot / Wet Disc	Foot / Wet Disc
Engine				
6.1	Engine manufacturer / type	HMC BETA	HMC BETA	HMC BETA
6.2	Engine power acc. to ISO 1585	kW	37	37
6.3	Rated speed	1/min	2,450	2,450
6.4	No. of cylinder / cubic capacity	anz/cm³	4 / 1,975	4 / 1,975
6.5	Fuel consumption acc. to VDI cycle	liter/h	NA	NA
Other Details				
8.1	Type of drive control	Power Shift	Power Shift	Power Shift
8.2	Operating pressure (System / Attach)	bar	195 / 155	195 / 155
8.3	Oil volume	liter	30	30
8.4	Sound level at driver's ear according to DIN 12 053	db(A)	103	103



■ Some of the photos may include optional equipment.

FORKLIFT TRUCKS **Environmentally - Friendly**

15L/18L/20LA-7

15G/18G/20GA-7

■ Contact your Hyundai dealer for more information. The machine shown may vary according to International standards.

HYUNDAI | FORKLIFT
HEAVY INDUSTRIES CO., LTD.

Head Office (Factory)
1 JEONHA-DONG, DONG-GU, ULSAN, KOREA TEL (82) (52) 202-7970, 7729, 0971 FAX (82) (52) 202-7979, 7720

Head Office (Sales Office)
14TH FL., HYUNDAI BLDG. 140-2, KYE-DONG, JONGNO-GU, SEOUL, KOREA 110-793
TEL (82) (2) 746-4526, 4529, 4505 FAX (82) (2) 746-7444-7445

Americas Operation : Hyundai Construction Equipment Americas, Inc.
955 ESTES AVENUE, ELK GROVE VILLAGE, IL. 60007, U.S.A. TEL (1) 847-437-3333 FAX (1) 847-437-3574

European Operation : Hyundai Heavy Industries Europe N.V.
VOSSENDAAL 11, 2440 GEEL, BELGIUM TEL (32) 14-56-2200 FAX (32) 14-59-3405

PLEASE CONTACT

www.hyundai-ce.com

2010. 04 Rev.2

HYUNDAI
HEAVY INDUSTRIES CO., LTD.

We build a better future

15L/18L/20LA-7

15G/18G/20GA-7

New criteria of Forklift Trucks

Hyundai introduces a new line of 7 series
LPG / Gasoline forklift trucks.

Excellent power and performance make
your business more profitable.



■ Some of the photos may include optional equipment.

High Power & Performance

Powerful Engine

HMC BETA Engine

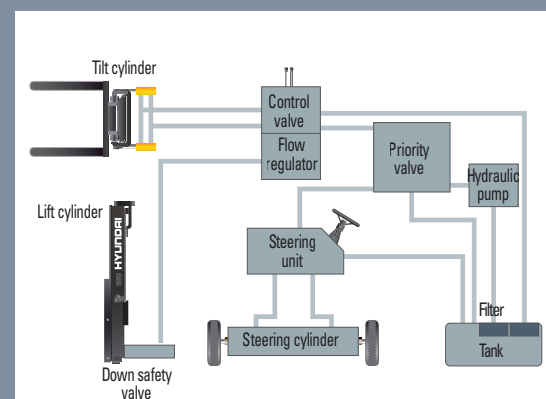
Market approved quality of HMC BETA engine ensures incomparable performance, durability and additional value to the machine. 37kW of the engine is more than enough to suit any work, not just with normal 37kW but with special attachments requiring high power as well.

37kW/2,450rpm



State-of-the-art hydraulic system

The latest large-capacity hydraulic system reacts quickly during operation, and a low-noise control valve increases both efficiency and durability.



The new master on the job-site!

Smooth running, efficient and ergonomically designed, 15L/18L/20LA-7, 15G/18G/20GA-7 series are made to meet your needs.



■ Some of the photos may include optional equipment.



Fast and stable performance

Being able to quickly raise and lower the mast, as well as tilt it forward and backward, provides the best operational conditions during unloading. When the truck is fully loaded, mast lowering speed is carefully controlled to ensure safety by the down control valve.

Faster travel speed & Gradeability

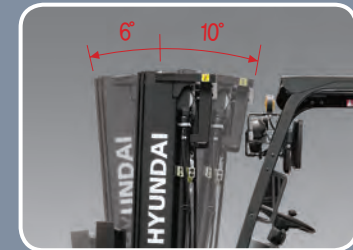
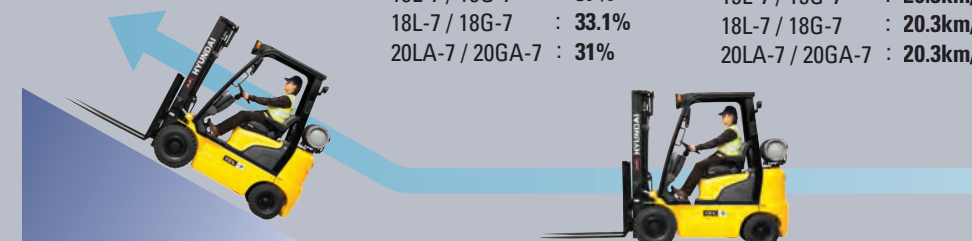
The powerful high-output engine provides greater acceleration, better gradeability and faster travel speed on any tough terrain or slope.

Gradeability(MAX)

15L-7 / 15G-7	: 37%
18L-7 / 18G-7	: 33.1%
20LA-7 / 20GA-7	: 31%

Travel speed(MAX)

15L-7 / 15G-7	: 20.3km/h
18L-7 / 18G-7	: 20.3km/h
20LA-7 / 20GA-7	: 20.3km/h



Increased mast tilting angle

Utilizing the mast tilting angle of 6 degrees forward and 10 degrees backward, the operator can safely and rapidly perform loading and unloading jobs.



Wet disc brake system

The adoption of Wet disc type brake improves brake performance. Brake pedal effort is improved about 45% at 20% slope and Wet disc brakes have service intervals 5 times longer than conventional.



Fully hydrostatic power steering

A hydraulic steering system always guarantees smooth and flexible steering, preventing overrun and kick-back.



OPSS (Operator Presence Sensing System)

Control of mast tilting, lifting and lowering is not possible through operation of the appropriate control when the operator is not in the normal position. (Option)

Comfortable Operation



Adjustable steering wheel

Steering wheel with horn button can be adjusted by a lever on the right-hand side for the most comfortable operator position.



Easy and safe shift lever

A single lever on the left side of the steering column gives the operator fast, easy control of direction. The engine can be started in case of neutral position of this lever.



Multi-function switch lever

Multi-functional switch lever gives easy access to lights and horn.



Quick response of operating control levers

Only minimal operator's effort is required for precise, safe and productive control.



Ergonomics driving space design!

A design based on human engineering relieves fatigue and increase operator's efficiency.

■ Some of the photos may include optional equipment.



Ergonomically positioned pedals

Based on human engineering, the accelerator, brake and inching pedals are optimally positioned for convenience while operating the equipment.



Cup holder & console box

Additional storage spaces are located inside the operating space for operator's convenience.



New high visibility for safe operation

The operator is able to work with increased safety and accuracy due to a wider view mast.

Operator friendly gauges and water-resistant monitor panel



- | | |
|---|---------------------------|
| ① Parking brake lamp | ⑨ Water separator lamp |
| ② Directional indicators | ⑩ Pre-heater indicator |
| ③ Fuel warning lamp | ⑪ Water temperature gauge |
| ④ Engine oil warning lamp | ⑫ Fuel gauge |
| ⑤ Transmission oil temperature warning lamp | ⑬ Hour meter |
| ⑥ Battery charging warning lamp | ⑭ Engine check lamp |
| ⑦ Air cleaner filter warning light | ⑮ Seat belt warning |
| ⑧ Working light indicator | ⑯ OPS warning |

Easily adjustable suspension seat

An attractive and adjustable seat, based on a human engineering design, provides great comfort, safety and durability.



Full-floating headguard mount

The anti-vibration rubber is installed between the guard and truck frame to reduce the source of vibration and noise while driving. This not only reduces operator's fatigue but also increases safety.



Endurance & Safety

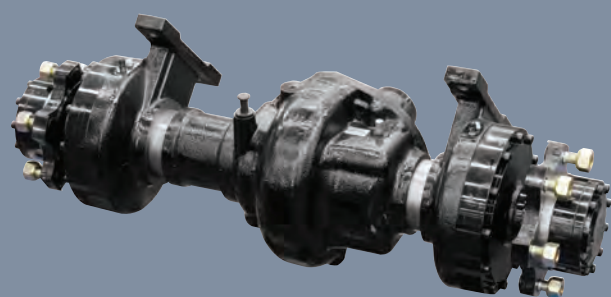
Strong overhead guard

The safety overhead guard meets EEC and ANSI regulations and protects the operator during hazardous jobs.



Parking brake

Ratchet type parking brake requires less efforts from the operator to set.



Highly durable split type drive axle

Powershift transmission provides fast travel speed and quiet travel under any heavy load condition, and boosts work efficiency.

Danger-free through high durability!

Safety and durability are priorities in the design of the equipment.



■ Some of the photos may include optional equipment.

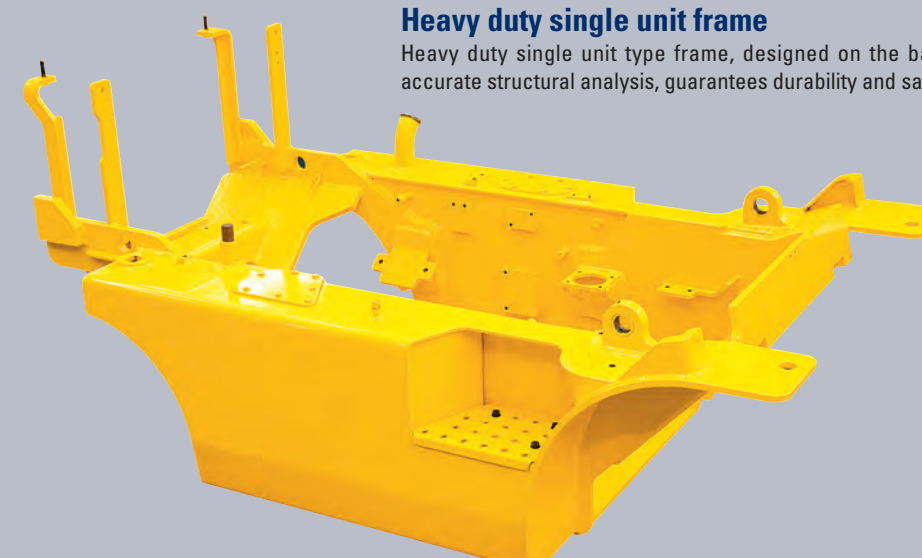


Large footboard & Hand grip

Wide "open" step offers convenience and safety when entering and exiting truck.

Heavy duty single unit frame

Heavy duty single unit type frame, designed on the basis of accurate structural analysis, guarantees durability and safety.



Improvement in maintenance of electric parts

Various electric parts are centralized in dash board resulting in improve-ment in maintenance



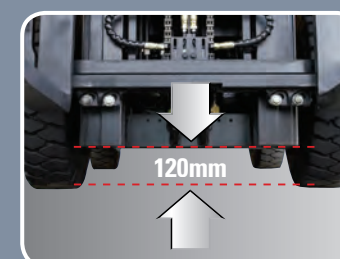
Expansion bellows

The expansion bellows absorbs vibration and reduces noise generated from the exhaust gas system and also extends the life cycle of exhaust gas system.



Bright, protected headlights

Bright, protected headlights are positioned for exceptional visibility.



Ground clearance

The engine and transmission are assembled horizontally and positioned high in the frame to protect expansive components during operation on rugged surface.

Durability **Easy** Maintenance



Electrically monitored air filter
Air cleaner sensor alerts the operator of a restricted air filter and allows replacement before damage.



Aluminum radiator with superb protection against heat



Battery master switch



An accessible, compact fuse box for easy inspection



Centralized design for easy service!
An ideal arrangement of component parts ensures easy accesses and conveniences for the maintenance.



Easy change air cleaner
The air filter is readily accessible for cleaning or replacement. (7inch Cyclone Type)



Portable side cover



Double battery installation



Quick and easy engine oil check

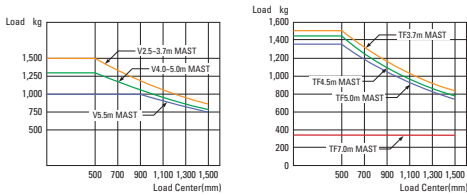
Mast Specification

Mast Type		Maximum Fork Height (mm)	Overall Height Lowered (mm)	Free Lift						Tilt Angle (deg)		Load Capacity w / o Side Shift 500mm LC			Load Capacity w / Side Shift 500mm LC			Truck Weight (Unloaded)		
				With backrest			With / o backrest					15L-7 15G-7	18L-7 18G-7	20LA-7 20GA-7	15L-7 15G-7	18L-7 18G-7	20LA-7 20GA-7	15L-7 15G-7	18L-7 18G-7	20LA-7 20GA-7
				15L-7 15G-7	18L-7 18G-7	20LA-7 20GA-7	15L-7 15G-7	18L-7 18G-7	20LA-7 20GA-7											
				kg	kg	kg	kg	kg	kg	Fwd	Bwd	kg	kg	kg	kg	kg	kg	kg	kg	kg
2-Stage Limited Free Lift	V250	2,525	1,755	145	145	150	145	145	150	6	10	1,500	1,750	2,000	1,400	1,650	1,890	2,764	2,938	3,085
	V270	2,725	1,855	145	145	150	145	145	150	6	10	1,500	1,750	2,000	1,400	1,650	1,890	2,778	2,952	3,099
	V300	3,025	2,005	145	145	150	145	145	150	6	10	1,500	1,750	2,000	1,400	1,650	1,890	2,798	2,972	3,119
	*V330	3,325	2,155	145	145	150	145	145	150	6	10	1,500	1,750	2,000	1,400	1,650	1,890	2,818	2,992	3,139
	V350	3,525	2,255	145	145	150	145	145	150	6	10	1,500	1,750	2,000	1,400	1,650	1,890	2,832	3,006	3,152
	V370	3,725	2,355	145	145	150	145	145	150	6	10	1,500	1,750	1,950	1,400	1,650	1,845	2,845	3,019	3,166
	V400	4,025	2,505	145	145	150	145	145	150	6	10	1,450	1,735	1,550	1,365	1,635	1,465	2,870	3,044	3,190
	V450	4,525	2,855	145	145	150	145	145	150	6	6	1,375	1,650	1,500	1,290	1,550	1,420	2,936	3,110	3,257
	V500	5,025	3,105	145	145	150	145	145	150	6	6	1,300	1,450	1,000	1,225	1,365	940	2,970	3,144	3,290
3-Stage Full Free Lift	V550	5,525	3,355	145	145	150	145	145	150	6	5	1,000	950	750	930	880	690	2,990	3,164	3,311
	TF370	3,735	1,805	798	798	803	1,299	1,299	1,300	6	6	1,500	1,750	1,925	1,400	1,650	1,820	2,913	3,087	3,243
	TF400	4,035	1,905	898	898	903	1,399	1,399	1,400	6	6	1,500	1,700	1,875	1,400	1,600	1,775	2,933	3,107	3,263
	TF430	4,335	2,005	998	998	1,003	1,499	1,499	1,500	6	6	1,450	1,700	1,825	1,365	1,600	1,725	2,952	3,126	3,282
	TF450	4,535	2,105	1,098	1,098	1,103	1,599	1,599	1,600	6	6	1,425	1,635	1,650	1,340	1,540	1,550	2,971	3,145	3,301
	TF470	4,735	2,155	1,148	1,148	1,153	1,649	1,649	1,650	6	6	1,400	1,450	1,350	1,320	1,365	1,275	2,983	3,157	3,313
	TF500	5,035	2,255	1,248	1,248	1,253	1,749	1,749	1,750	6	6	1,375	1,400	1,000	1,295	1,320	935	3,002	3,176	3,332
	TF550	5,535	2,455	1,448	1,448	1,453	1,949	1,949	1,950	6	5	1,050	1,100	750	985	1,030	690	3,040	3,214	3,370
	TF600	6,035	2,655	1,648	1,648	1,653	2,149	2,149	2,150	6	5	750	750	500	700	700	450	3,112	3,286	3,442
	TF650	6,535	2,855	1,848	1,848	1,853	2,349	2,349	2,350	3	3	500	500	450	450	450	400	3,157	3,331	3,487
TF700	7,035	3,055	2,048	2,048	2,053	2,549	2,549	2,550	3	3	350	250	300	300	200	250	3,193	3,367	3,523	

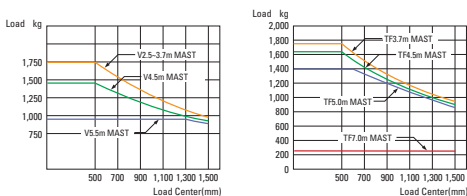
* Standard

Load Capacity

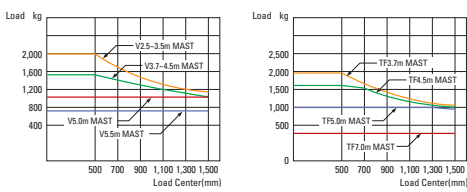
15L-7 / 15G-7



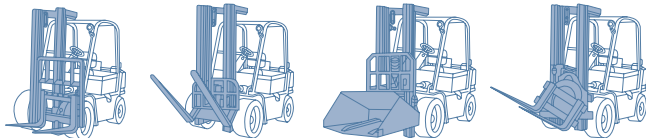
18L-7 / 18G-7



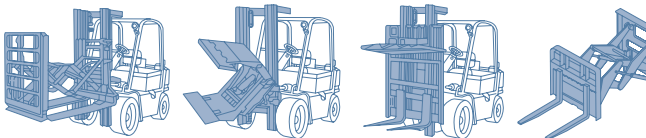
20LA-7 / 20GA-7



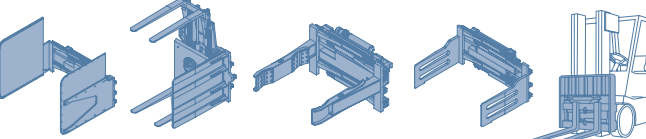
Various Attachments



Side Shift Hinged Fork Hinged Bucket Rotating Fork



Push Pull Rotating Roll Clamp Load Stabilizer Load Extender



Carton Clamp Pallet Invert Drum Clamp Bale Clamp Fork Positioner

Optional Items

- CABIN & HEATER
 - SIDE SHIFT
 - INTEGRAL SIDE SHIFT
 - FORK
 - 750mm, 850mm, 1050mm, 1200mm, 1350mm, 1500mm
 - OVER SHOE
 - 1300MM, 1500MM, 1700MM
 - TILTING
 - 6/10°, 6/6°, 6/5°, 3/3°
- TIRE
 - CUSHION, NO-MARKING
 - SEAT
 - POCKET, ARM REST, HIP REST
 - LPG CLAMP
 - SWING OUT, SWING DOWN
 - M.C.V
 - 4-SPOOL
 - MASTER SWITCH
 - BEACON LAMP
- HAZARD SWITCH
 - WORK LAMP
 - LICENCE LAMP
 - OPSS
 - TARAVEL, TARAVEL + MAST
 - ATTACH PIPING
 - 3 SPOOL-PIPING, 4 SPOOL-PIPING