

Specification		
Identification		
1.1	Manufacturer	Hyundai
1.2	Manufacturer's type designation	80D-7
1.3	Drive: electric (battery or mains),diesel,petrol,fuel gas>manual	DIESEL
1.4	Type of operation:hand,pedestrian,standing,seated,order-picker	seated
1.5	Load capacity / rated load	kg/lb 8,000 / 17,637
1.6	Load center distance	c(mm/in) 600 / 24
1.8	Load distance, center of drive axle to fork	x(mm/in) 690 / 27
1.9	Wheelbase	y(mm/in) 2,400 / 94.5
Weights		
2.1	Service weight	kg/lb 11,140 / 24,560
2.2	Axle loading, loaded front/rear	kg/lb 17,170 / 1,970
2.3	Axle loading, unloaded front/rear	kg/lb 4,870 / 6,270
Wheels, Chassis		
3.1	Tires:solid rubber, superelastic, pneumatic, polyurethane	Pneumatic
3.2	Tires size, front(φ x width)	9.00-20-14PR
3.3	Tires size, rear(φ x width)	9.00-20-14PR
3.5	Wheels, number front x rear (x=driven wheels)	4 x 2
3.6	Track width, front	b10 (mm/in) 1,632 / 64.3
3.7	Track width, rear	b11 (mm/in) 1,700 / 66.9
Basic Dimensions		
4.1	Mast / fork carriage tilt forward / backward (α/β)	degrees 15 / 10
4.2	Lowered mast height	h1 (mm/in) 2,675 / 105.3
4.3	Free lift	h2 (mm/in) 145 / 5.7
4.4	Lift height	h3 (mm/in) 3,040 / 119.7
4.5	Extended mast height	h4 (mm/in) 4,375 / 172
4.7	Overhead load guard (cab) height	h5 (mm/in) 2,603 / 102.5
4.8	Seat height / standing height	h7 (mm/in) 1,464 / 57.6
4.12	Coupling height	h10 (mm/in) 493 / 19.4
4.19	Overall length	l1 (mm/in) 5,000 / 196.9
4.20	Length to face of forks	l2 (mm/in) 3,800 / 149.6
4.21	Overall width	b1 (mm/in) 2,277 / 89.6
4.22	Fork dimensions(hook type)	s / e / l(mm/in) 1,200 x 180 x 70
4.23	Fork carriage ISO 2328, class / type A,B	Class IV
4.24	Fork-carriage width	b12 (mm/in) 2,268 / 89.3
4.31	Ground clearance, loaded, under mast	m1 (mm/in) 250 / 9.84
4.32	Ground clearance, centre of wheelbase	m2 (mm/in) 287 / 11.3
4.33	Aisle width for pallets 1,000x1,200 crossways (LxW)	Ast(mm/in) 5,410 / 213
4.34	Aisle width for pallets 800x1,200 lengthways (WxL)	Ast(mm/in) 5,610 / 221
4.35	Turning radius	Wa(mm/in) 3,520 / 138.6
4.36	Smallest pivot point distance	b13 (mm/in) 239.5 / 9.4
Performance Data		
5.1	Travel speed, unloaded	km/h / mph 32.7 / 20.3
5.2	Lift speed, loaded/ unloaded	mm/s (410 / 80.7) / (480 / 94.5)
5.3	Lowering speed, loaded/unloaded	mm/s (500 / 98.4) / (450 / 88.6)
5.5	Drawbar pull, loaded	kg/lb 6,363 / 11,552
5.7	Gradient performance, loaded/ unloaded	% 35.1 / 25.9
5.9	Acceleration time, loaded/ unloaded(10m)	sec NA
5.10	Service brake	Foot
Engine		
6.1	Engine manufacturer / type	MHI S6SDT
6.2	Engine power acc. to ISO 1585	kW 64.7
6.3	Rated speed	1/min 2,200
6.4	No. of cylinder / cubic capacity	anz/cm ³ 6-4,996
6.5	Fuel consumption acc. To VDI cycle	ℓ / h NA
Other Details		
8.1	Type of drive control	Power Shaft
8.2	Operating pressure	bar 210
8.3	Oil volume	ℓ 100
8.4	Sound level at driver's ear according to DIN 12 053	db(A) 85



■ Some of the photos may include optional equipment.

80D-7

FORKLIFT TRUCKS



Head Office 1 JEONHA-DONG, DONG-GU, ULSAN, KOREA
Tel.: (82) (52) 202-7970, 7729 Fax: (82) (52) 202-7979, 7720
U.S. Operation Hyundai Construction Equipment U.S.A., Inc.
955 ESTES AVENUE, ELK GROVE VILLAGE IL., 60007
Tel.: (1) 847-437-3333 Fax: (1) 847-437-3574
European Operation Hyundai Heavy Industries Europe N.V.
VOSSENDAAL 11, 2440 GEEL, BELGIUM
Tel.: (32) 14-562200 Fax: (32) 14-593405 ~ 06

PLEASE CONTACT

www.hyundai-ce.com

2008. 02. Rev 0



We build a better future

FORKLIFT *Excellent* MODEL

Absolute Power, The new master on the job-site !

New concept forklift truck 80D-7 will increase your productivity more than ever.

80D -7

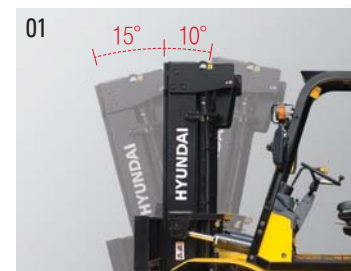
Powerful Engine Mitsubishi S6S-DT Engine

The six cylinders turbo-charged engine is built for power, reliability and economy. This engine meets EPA tier II and EU stage II emission regulation.



Faster Travel Speed & Gradeability

The powerful high-output engine provides greater acceleration, better gradeability and faster travel speed on any tough terrain or slope.



01_ Increased mast tilting angle

Utilizing the mast tilting angle of 15 degrees forward and 10 degrees backward, the operator can safely and rapidly perform loading and unloading jobs.

02_ Fully hydrostatic power steering

A hydraulic steering system always guarantees smooth and flexible steering, preventing overrun and kick-back.



03_ Key-locking fuel filler

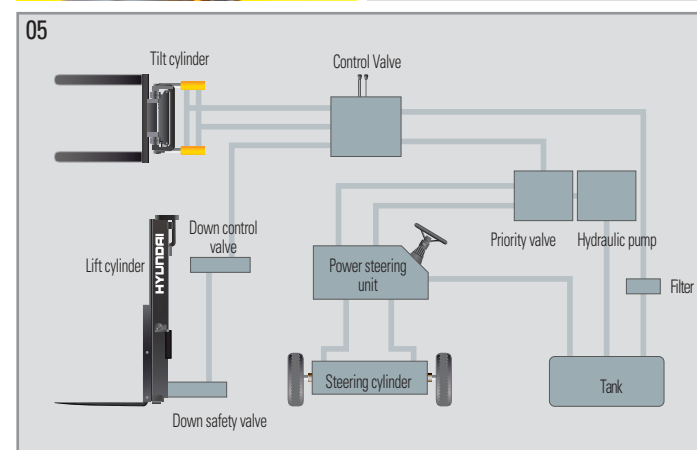
Increased security on job sites with locking fuel cap, plus an increased capacity fuel tank for less down time.

04_ Wet disc brake system

The adoption of wet disc type brake improves brake performance. Service intervals 5 times longer than drum brake.

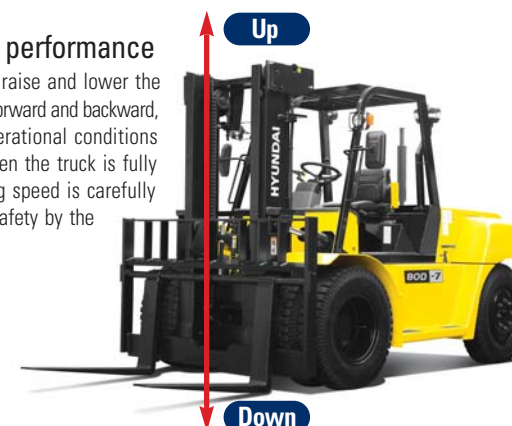
05_ State-of-the-art hydraulic system

The latest large-capacity hydraulic system reacts quickly during operation, and a low-noise control valve increases both efficiency and durability.



Fast and stable performance

Being able to quickly raise and lower the mast, as well as tilt it forward and backward, provides the best operational conditions during unloading. When the truck is fully loaded, mast lowering speed is carefully controlled to ensure safety by the down control valve.



06_ High durable mast

Included side roller with great durability for mast and carriage.

07_ Expansion bellows

The expansion bellows absorbs vibration and reduces noise generated from the exhaust gas system and also extends the life cycle of exhaust gas system.

08_ Fuel Tank Safety Valve

Integrated Safety Check Valve shuts off fuel supply in the unlikely condition of a truck overturn.

09_ Large footboard

Wide "open" step offers convenience and safety when entering and exiting truck.

10/11_ Bright, protected headlights and rear working light

Bright, protected headlights and rear working light are positioned for exceptional visibility.

12_ Full-automatic Transmission

Full-automatic transmission gives easy, convenient handling and soft, smooth shifting. The operator can select two kinds of automatic mode. (1st↔3rd, 2nd↔3rd)

13_ Durable drive axle

The hypoid type planetary reduction drive axle delivers the desired torque to the drive wheels smoothly.

14_ Heavy duty single unit frame

Heavy duty single unit type frame, designed on the basis of accurate structural analysis, guarantees durability and safety.



Some of the photos may include optional equipment.

Ergonomics driving space design !

A design based on human engineering relieves fatigue and increase operator's efficiency.

80D -7



■ Some of the photos may include optional equipment.



01_Ergonomically positioned pedals

Based on human engineering, the accelerator, brake and inching pedals are optimally positioned for convenience while operating the equipment.

02_The latest anti-vibration and shock absorbing system

The state-of-the-art hydraulic suspension cab system, using hydraulic and anti-vibration rubber insulator, is installed between the guard and truck frame to reduce the source of vibration and noise while driving. This not only reduces operator's fatigue but also increases safety.

03_Adjustable steering wheel

Steering wheel can be adjusted by a lever on the right-hand side for the most comfortable operator position.

04_Easy and safe shift lever

A single lever on the left side of the steering column gives the operator fast, easy control of speed and direction. The engine can be started in case of neutral position of this lever.

05_Multi-function switch lever

Multi-functional switch lever gives easy access to lights and horn.

06_Quick Response of Operating Control Levers

Only minimal operator's effort is required for precise, safe and productive control.

07_Strong overhead guard

The safety overhead guard meets EEC and ANSI regulations and protects the operator during hazardous jobs.

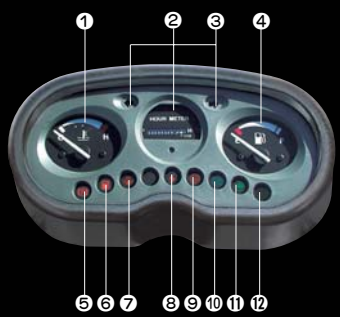
08_Parking Brake

Toggle type parking brake requires less efforts for the operator to set.



■ Some of the photos may include optional equipment.

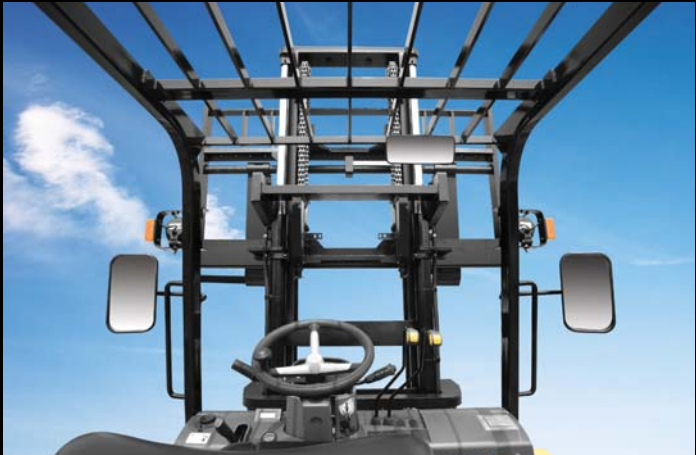
Operator friendly gauges and water-resistant monitor panel



- 1 Water temperature gauge
- 2 Hour meter
- 3 Directional indicators
- 4 Fuel gauge
- 5 Parking Brake
- 6 Fuel warning lamp
- 7 Engine oil warning lamp
- 8 Battery charging warning lamp
- 9 Air cleaner filter warning light
- 10 Head light indicator
- 11 Working light indicator
- 12 Pre-heater indicator

Easily adjustable suspension seat

An attractive and adjustable seat, based on a human engineering design, provides great comfort, safety and durability.



New high visibility for safe operation

The operator is able to work with increased safety and accuracy due to a wider view mast.



Cup holder & console box

Additional storage spaces are located inside the operating space for operator's convenience.

FORKLIFT *Excellent* MODEL

Centralized design for
easy service !

An ideal arrangement of component parts ensures easy access and convenience for maintenance.

80D -7



■ Some of the photos may include optional equipment.

01_Large Open Engine Hood

Highly accessible engine compartment assures fast and efficient maintenance.



02_Electrically Monitored Air Filter

Air cleaner sensor alerts the operator of a restricted air filter and allows replacement before damage.



03_Easy Maintenance oil check

The T/M oil level can be checked easily without any disassembly.



04_Brake fluid reservoir

Highly visible, easily accessible reservoir makes for quicker daily inspections.



05_Transmission oil temp gauge

The temperature gauge is located in the dash and provides the operator with visual reference of the transmission temperature.



06_Easy Change Air Cleaner

The air filter is readily accessible for cleaning or replacement.



07_Maintenance free battery



08_Engine oil condition check



09_Easy-to-change radiator

OPSS (Operator Presence Sensing System)

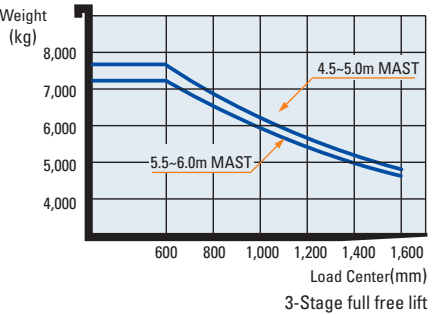
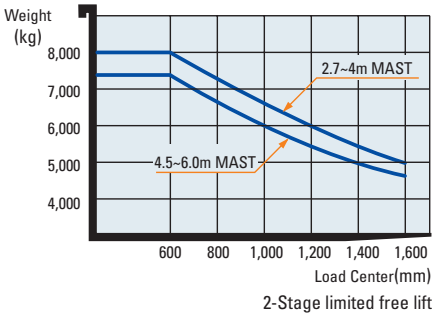
Control of mast tilting, lifting and lowering is not possible through operation of the appropriate control when the operator is not in the normal position.(Option)

Mast Specifications

Mast Type		Maximum Fork Height	Overall Height(mm)				Tilt Angle		Load Capacity At 600mm 24 in LC	Truck Weight	Free Lift(mm)		
			Lowered	Extended			Fwd	Bwd			With bkr	With / o bkr	With bkr (Option)
				With bkr	With / o bkr	With bkr (Option)							
		mm(in)	mm(in)	mm(in)	mm(in)	mm(in)	deg	deg	kg(lb)	kg(lb)	mm(in)	mm(in)	mm(in)
2 / Stage limited free lift	V270	2,740 (107.9)	2,525 (99.4)	4,050 (159.4)	4,048 (159.4)	4,075 (160.4)	15	10	8,000 (17,640)	11,091 (24,400)	150 (5.9)	150 (5.9)	150 (5.9)
	*V300	3,040 (119.7)	2,675 (105.3)	4,350 (171.3)	4,348 (171.2)	4,375 (172.2)	15	10	8,000 (17,640)	11,140 (24,580)	150 (5.9)	150 (5.9)	150 (5.9)
	V330	3,340 (131.5)	2,825 (111.2)	4,650 (183.1)	4,648 (183.0)	4,675 (184.1)	15	10	8,000 (17,640)	11,189 (24,616)	150 (5.9)	150 (5.9)	150 (5.9)
	V350	3,540 (139.4)	2,925 (115.2)	4,850 (190.9)	4,848 (190.9)	4,875 (191.9)	15	10	8,000 (17,640)	11,222 (24,688)	150 (5.9)	150 (5.9)	150 (5.9)
	V370	3,740 (147.2)	3,025 (119.1)	5,050 (198.8)	5,048 (198.7)	5,075 (199.8)	15	10	8,000 (17,640)	11,254 (24,759)	150 (5.9)	150 (5.9)	150 (5.9)
	V400	4,040 (159.1)	3,175 (125.0)	5,350 (210.6)	5,348 (210.6)	5,375 (211.6)	15	10	8,000 (17,640)	11,303 (24,867)	150 (5.9)	150 (5.9)	150 (5.9)
	V450	4,540 (178.7)	3,475 (136.8)	5,850 (230.3)	5,848 (230.2)	5,875 (231.3)	15	10	8,000 (17,640)	11,518 (25,340)	150 (5.9)	150 (5.9)	150 (5.9)
	V500	5,040 (198.4)	3,725 (146.7)	6,350 (250.0)	6,348 (249.9)	6,375 (251.0)	15	10	7,800 (17,199)	11,600 (25,520)	150 (5.9)	150 (5.9)	150 (5.9)
	V550	5,540 (218.1)	3,975 (156.5)	6,850 (269.7)	6,848 (269.6)	6,875 (270.7)	15	10	7,550 (16,648)	11,681 (25,698)	150 (5.9)	150 (5.9)	150 (5.9)
	V600	6,040 (237.8)	4,225 (166.3)	7,350 (289.4)	7,348 (289.3)	7,375 (290.4)	15	10	7,350 (16,207)	11,763 (25,879)	150 (5.9)	150 (5.9)	150 (5.9)
3 / Stage full free lift	TF450	4,570 (179.9)	2,750 (108.3)	5,880 (232.5)	5,902 (232.4)	5,905 (232.5)	15	10	8,000 (17,640)	11,788 (25,934)	1,440 (56.7)	1,418 (55.8)	1,415 (55.7)
	TF500	5,070 (199.6)	2,950 (116.1)	6,380 (252.2)	6,402 (252.1)	6,405 (252.2)	15	10	7,700 (16,979)	11,891 (26,160)	1,640 (64.6)	1,618 (63.7)	1,615 (63.6)
	TF550	5,570 (219.3)	3,150 (124.0)	6,880 (271.9)	6,902 (271.8)	6,905 (271.9)	15	10	7,450 (16,427)	11,993 (26,385)	1,840 (72.4)	1,818 (71.5)	1,815 (71.5)
	TF600	6,070 (239.0)	3,350 (131.9)	7,380 (291.5)	7,402 (291.5)	7,405 (291.5)	15	10	7,200 (15,876)	12,096 (26,611)	2,040 (80.3)	1,418 (79.4)	2,015 (79.3)

* Standard

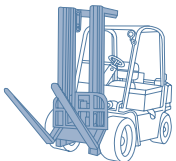
Load Capacity



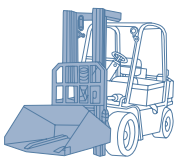
Various Attachments



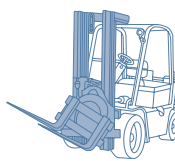
Side Shift



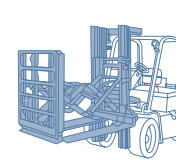
Hinged Fork



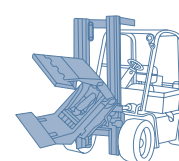
Hinged Bucket



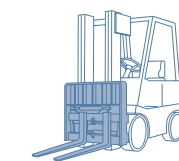
Rotating Fork



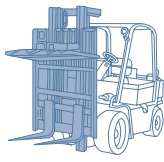
Push Pull



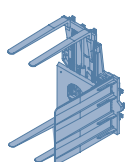
Rotating Roll Clamp



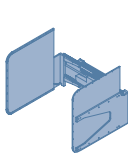
Fork Positioner



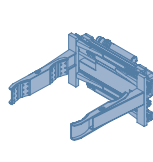
Load Stabilizer



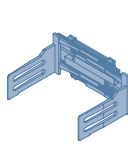
Pallet Invert



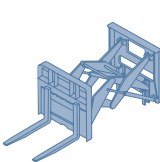
Carton Clamp



Drum Clamp



Bale Clamp



Load Extender

Optional Items

• FORK(L x W x T)

1350mm x 180mm x 70mm,
1500mm x 180mm x 70mm,
1800mm x 180mm x 70mm,

2000mm x 180mm x 70mm,
2400mm x 180mm x 70mm

• OVER SHOE

1800mm, 2000mm, 2200mm, 2300mm

• TIRE : Solid

• SEAT : Safety Belt, Arm Rest
• M.C.V : 3-Spool, 4-Spool

• REAR WORK LAMP

• INTERNAL PIPING
• HOSS-REEL • BEACON
• HAZARD • BACK BUZZER